

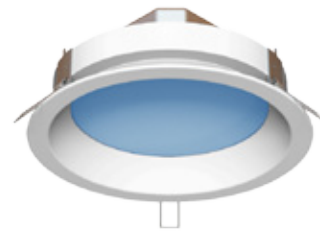
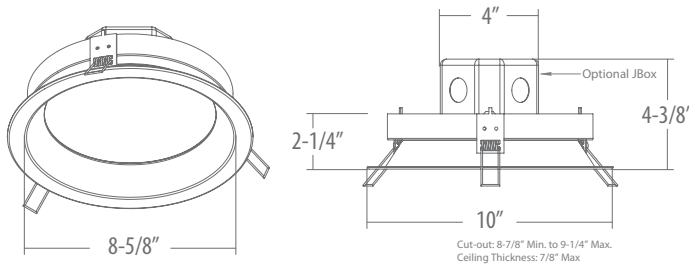
APPLICATION

For the use of direct flood and/or accent lighting. Perfect for applications desiring a dynamic color changing effect. Recommended for retail, modern residential, hospitality and entertainment installations. RGBW design allows fine-tuned pastel colors, saturated hues without sacrificing illumination brightness.

- 15W 750 Max. Lumen
- DMX direct via LCD display.
- LED Die Colors: RGBW
- Static Colors Available

- Using InternaMix™ proprietary technology, colors are efficiently blended together through an internal mixing chamber. The one-color output reduces unsightly views of isolated rainbow like striations.
- Smooth and flicker-free dimming of all colors down to 1% using patented color mixing and dimming technologies developed at Philips Color Kinetics®
- 3 Year Warranty

DIMENSIONS



ORDERING - Example: SPDR8



HOUSING

SPDR8

ACCESSORIES

96W 120V/277V Power Supply with Junction Box LD533V024-1277-96-JB

- 120V-277V Input
- Electrical Junction Box Included
- Each power supply energizes up to 2 lights.



4 Channel 200W DMX Data Enabler SDE24V24RGBW-400

- 12V or 24 DC Input
- cETLus listed
- DmX-512 (1990) & Pre-Programmed Control



SPECIFICATIONS

OUTPUT

Beam Angle: 120°

Lumens: 750 Max. Lumen

Efficacy (lm/W): 50 lm/W

LED Channels: Red/Green/Blue/White

ELECTRICAL

Input Voltage: Direct 24V DC fed by 120-277V power supply

Power Consumption: 15W

CONTROL

Interface: DMX direct via remote data enabler

Control System: DirectDMX Color Control. Color controlled with USITT DMX512A Standard Protocol to work with Coloronix or 3rd Party DMX Systems Data Input/Output ports allow daisy-chaining of DMX Signal.

LED Die Colors: Red (620-635nm), Green (520-535nm), Blue (450-465nm) and Neutral White (5000k)

Static Color Available: All Standard Colors, Consult Factory.

Dimming: Smooth and flicker-free dimming of all colors down to 1% using Patented Color Mixing and Dimming technologies developed at Philips Color Kinetics®

Color Mixing: Using InternaMix™ proprietary technology, colors are efficiently blended together through an internal mixing chamber. The one-color output reduces unsightly views of isolated Red, Green and Blue Diodes for a seamless rainbow-free appearance.

LUMEN MAINTENANCE

L70 Life: 35,000 Hours for ambient temperatures under 100°F.

PHYSICAL

Dimensions (Height x Width x Length): 4-3/8" x 4" x 10"

Housing Material: Extruded aluminum to protect light emitting diodes, other electronics and preserve optical alignment. Integral junction box provides easy access for electrical maintenance. Steel screws installed on face plate for a tight gap-free installation onto housing. Cast aluminum light engine allows for 90° Tilt. Painted black to maximize color mixing and eliminate stray light leaks.

Weight: 7 lbs.

Lens: Diffuse polycarbonate lens

Connections: Proprietary miniature 3-pin watertight DMX connection for easy daisy-chain connections up to 2.5 feet on center (32 links max)

Mounting: Mounts directly to ceiling

Temperature Range: -4°F - 113°F Ambient

CERTIFICATION

Complies to UL 1598 and ANSI/UL 8750.

WARRANTY

3-Year Warranty