

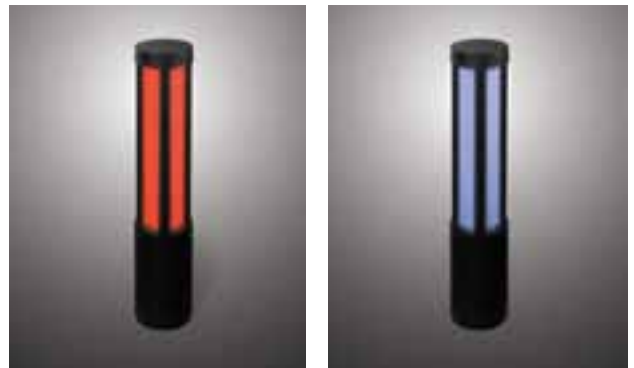
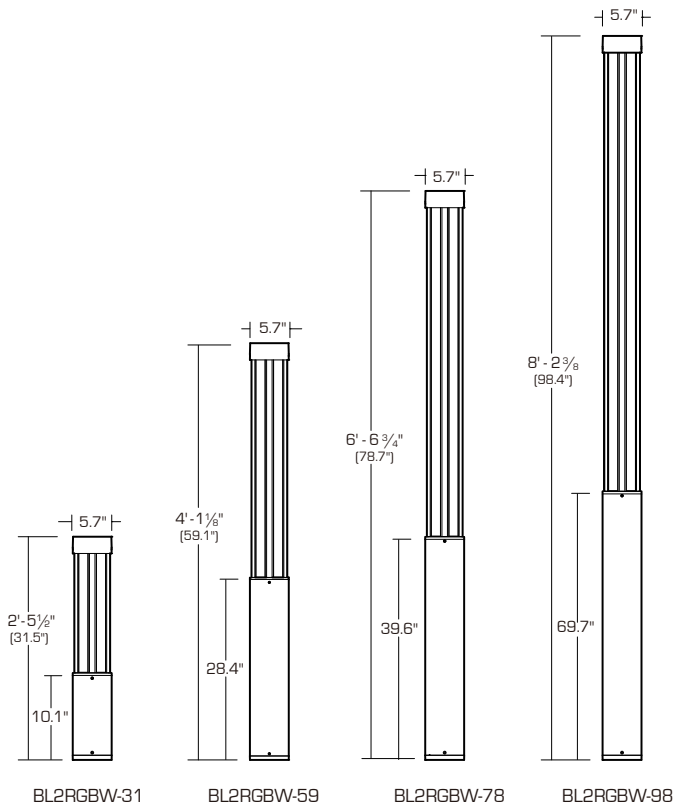
APPLICATION

The ColorPole is a flexible High Performance line of bollards and column lights designed for decorative lighting, way-marking public areas, driveways and access roads. RGBW Design allows for fine-tuned pastels and saturated colors without sacrificing illumination brightness.

- 12W-30W, 600-1,500 lumen
- DMX direct via Data Enabler
- IP67
- LED Die Colors: RGBW
- Static Colors Available

- Using InternaMix proprietary technology, colors are effectively blended together through an internal mixing chamber. The one-color output reduces unsightly views of isolated rainbow-like striations.
- Smooth and flicker-free dimming of all colors down to 1% using patented color mixing and dimming technologies.
- 3-Year Warranty

DIMENSIONS



BL2RGBW-31 Shown for color-changing reference

ORDERING – Example: BL2RGBW-31W-XXX-XXX



FIXTURE

- BL2RGBW-31:** 12W, 31.5" H
- BL2RGBW-59:** 18W, 59.1" H
- BL2RGBW-78:** 24W, 78.7" H
- BL2RGBW-98:** 30W, 98.4" H

FINISH

- Blank:** Black (Standard Color)
- W:** White

POWER INPUT

- 24:** 24V
- 120:** 120V
- 277:** 277V

DRIVER

- Blank:** DMX
- WALIB:** Bluetooth Control

SPECIFICATIONS

OUTPUT

Lumens: 1,500 Max. Lumen

Efficacy (lm/W): 50 lm/W

LED Channels: Red/Green/Blue/White

ELECTRICAL

Input Voltage: Available in 24V, 120V or 277V

Power Consumption: 12W-30W

CONTROL

Interface: DMX direct via data enabler

Control System: DirectDMX Color Control. Color controlled with USITT DMX512A Standard Protocol to work with Coloronix or 3rd Party DMX Systems. Data Input/Output ports allow daisy-chaining of DMX Signal. Bluetooth option available. Not recommended for large scale installations or where programming requires intensive dynamic color syncing across fixtures.

LED Die Colors: Red (620-635nm), Green (520-535nm), Blue (450-465nm), White (4000K)

Static Color Available: All Standard Colors, Consult Factory.

Dimming: Smooth and flicker-free dimming of all colors down to 1% using Patented Color Mixing and Dimming technologies developed at Philips Color Kinetics[®]

Stand Alone Control: Pre-Programmed static and dynamic scenes, as well as specific colors, can be user activated by the integral Data Enabler's computer eliminating the need for an external data source.

Color Mixing: Using InternaMix[™] proprietary technology, colors are efficiently blended together through an internal mixing chamber. The one-color output reduces unsightly views of isolated Red, Green and Blue Diodes for a seamless rainbow-free appearance.

LUMEN MAINTENANCE

L70 Life: 35,000 Hours for ambient temperatures under 100°F.

PHYSICAL

Dimensions (Height x Diameter):

BL2RGBW-31: 31.5" x 5.7"

BL2RGBW-59: 59.1" x 5.7"

BL2RGBW-78: 78.7" x 5.7"

BL2RGBW-98: 98.4" x 5.7"

Housing Material: Extruded Aluminum

Lens: High Impact Poly-Carbonate

Connections: Standard wiring for power in, RJ45 for DMX In/Out

Mounting: Mounting via hidden anchor bolts

Temperature Range: -20C to 40C (-4F to 104F)

CERTIFICATION

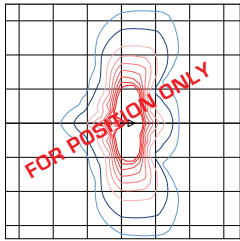
Complies to UL1598 and ANSI/UL 8750. IP66

WARRANTY

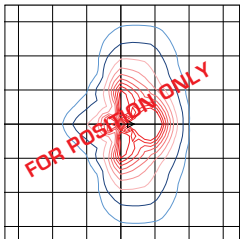
3-Year Warranty

PHOTOMETRY

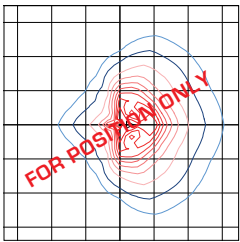
ISOLINES



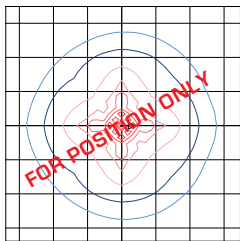
TYPE II



TYPE III



TYPE IV



TYPE V

LUMINAIRE AND ACCESSORIES

LUMINAIRE

ITEM NO.

12W, 31.5" H. x 5.7" Dia. Bollard

BL2RGBW-31



18W, 59.1" H. x 5.7" Dia. Bollard

BL2RGBW-51



24W, 78.7" H. x 5.7" Dia. Column

BL2RGBW-78



30W, 98.4" H. x 5.7" Dia. Column

BL2RGBW-98

